

Madame Framboise

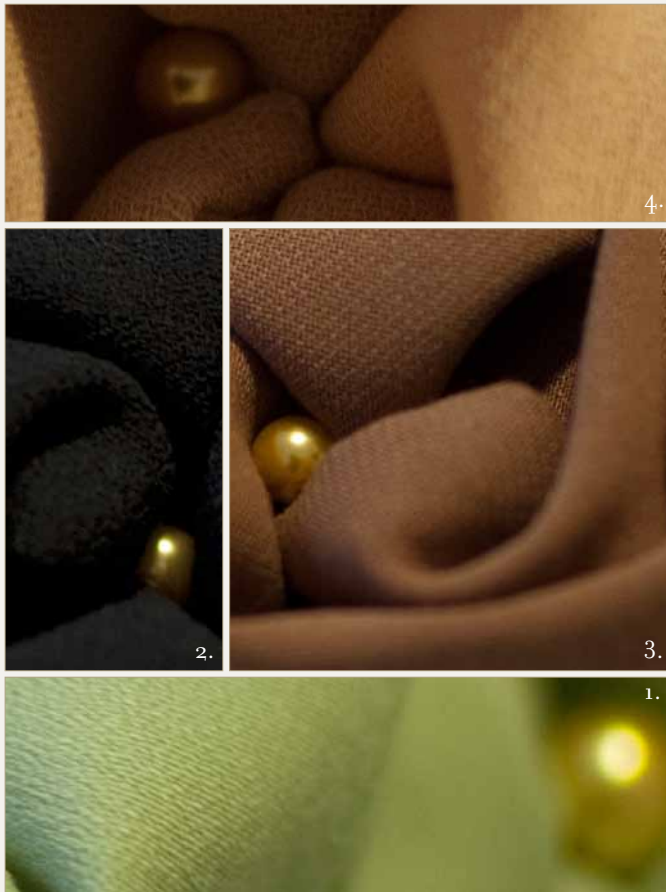
A\W ❁ 10\11

designed by Giulia Landini

“Chiaroscuri”



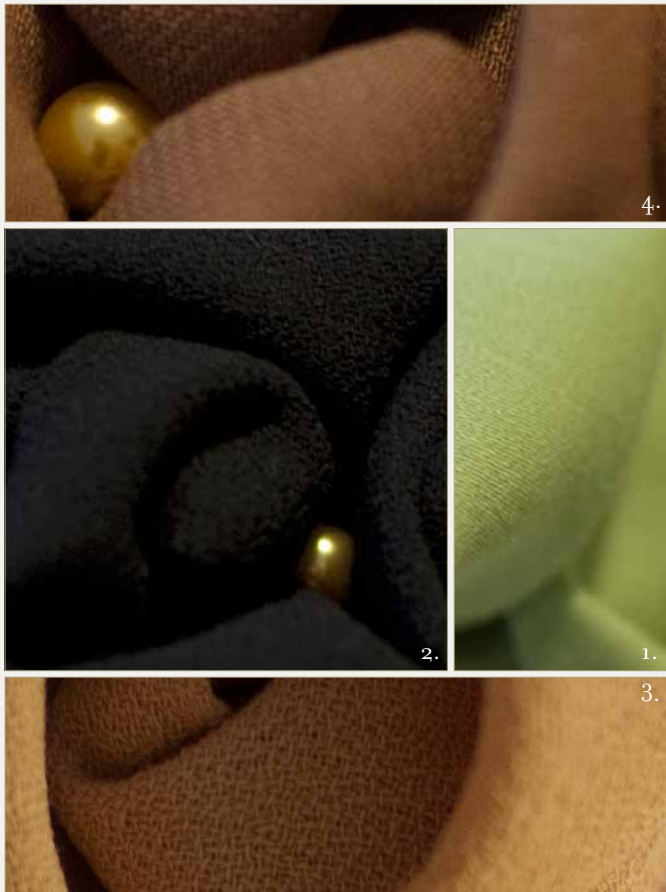




ROSES COMB wool-crêpe

Available in:

1. Green Tea, 2. Black, 3. Caramel, 4. Camel



ROSES HAIR-BAND wool-crépe

Available in:

1. Green Tea, 2. Black, 3. Caramel, 4. Camel



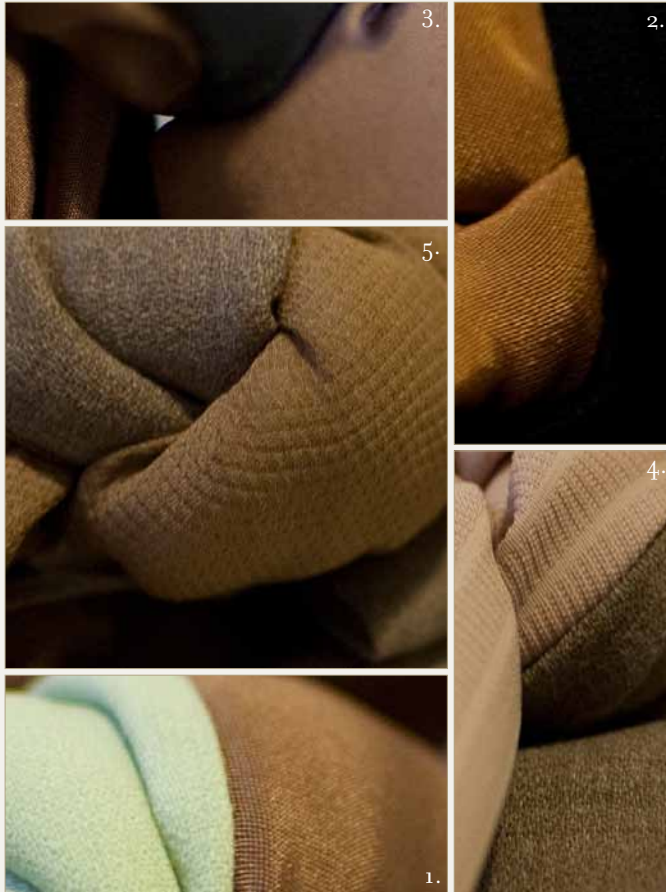




PUDDING ROSE BROOCH silk-crêpe and alcantara

Available in:

1. Chocolate Brown, 2. Noisette



PADDED HEAD-BAND wool-crépe and silk

Available in:

1. Green Tea /Caramel, 2. Black/Caramel, 3. Black/Brown,
4. Ecrú/Beige 5. Ecrú/Noisette











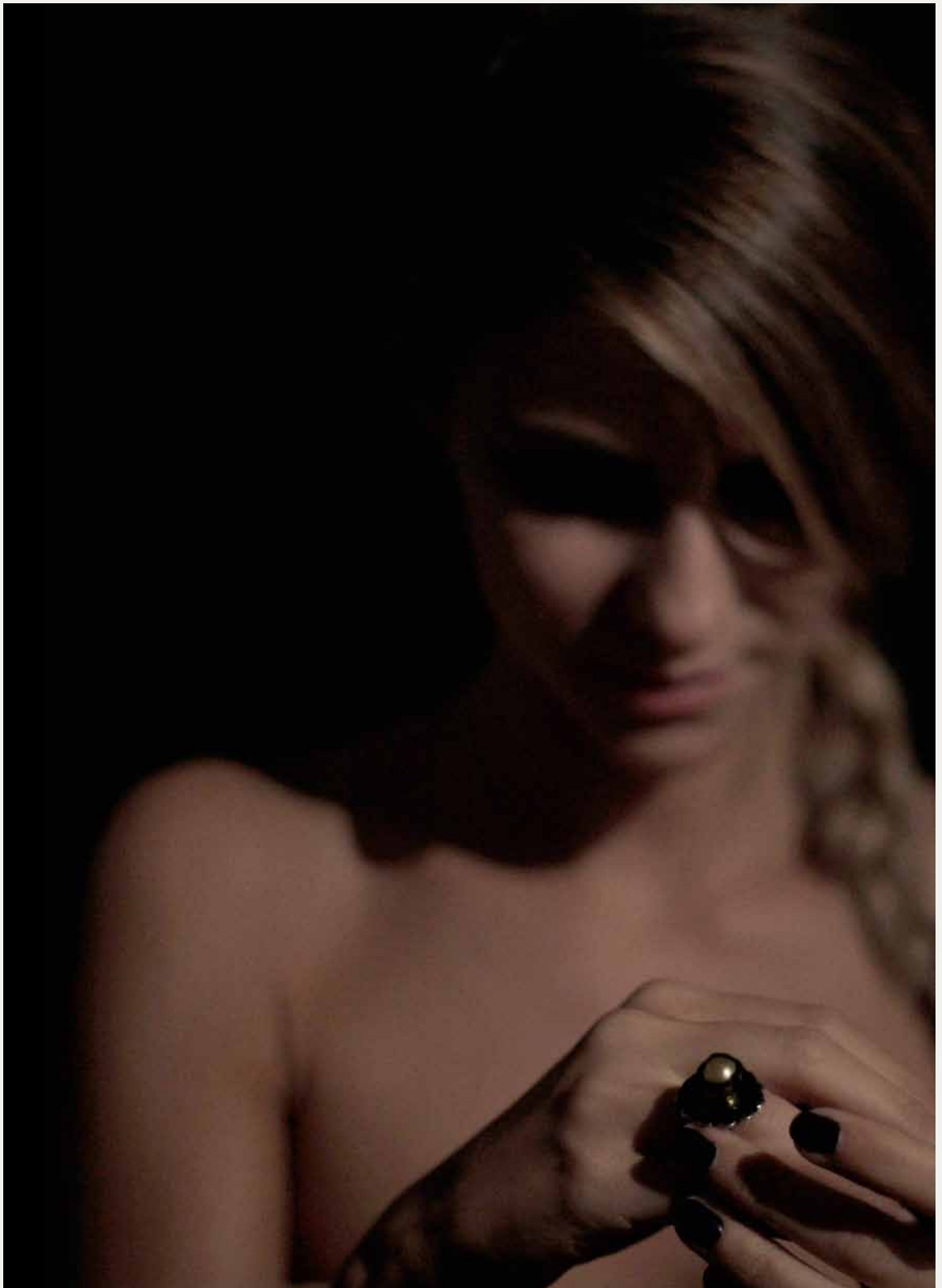
PUDDING MILLEFOGLIE NECKLACE wool-cr pe and silk

Available in:

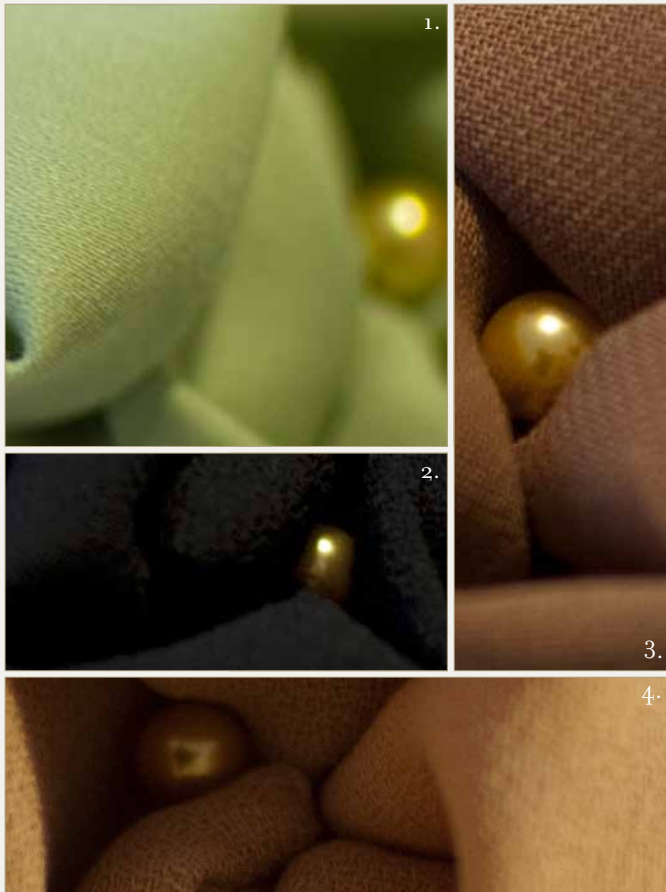
1. Green Tea/Noisette, 2. Camel/Brown 3. Black/Noisette



TRAPED PEARL RING



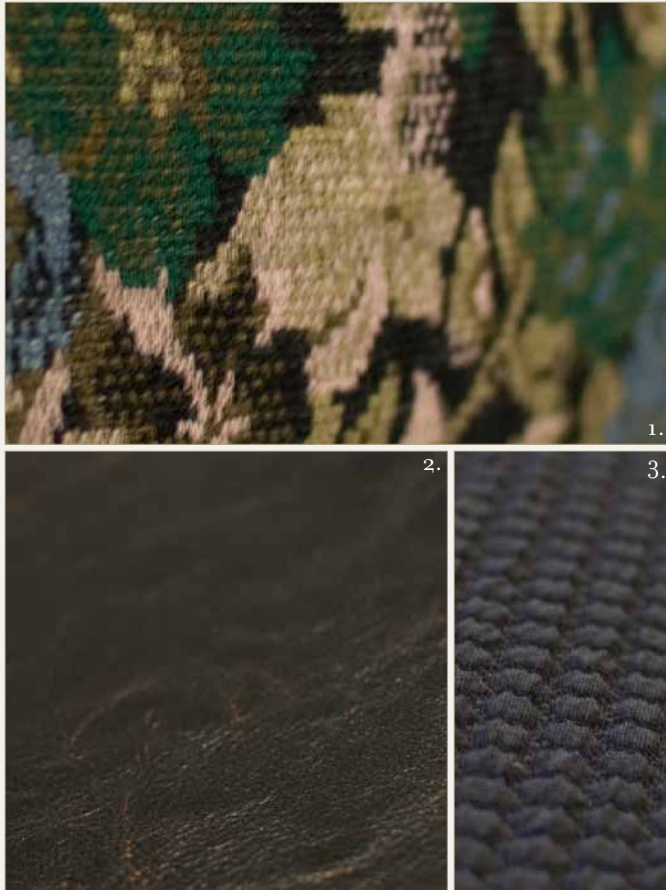




ROSE RING wool-crépe

Available in:

1. Green Tea, 2. Black, 3. Caramel, 4. Camel



Limited Edition

PILLOW BAG padded clutch

Available in:

1. Pattern Wool-Jaquard, 2. Brown Eco-Leather,
3. Dark-Grey Quilted Cotton





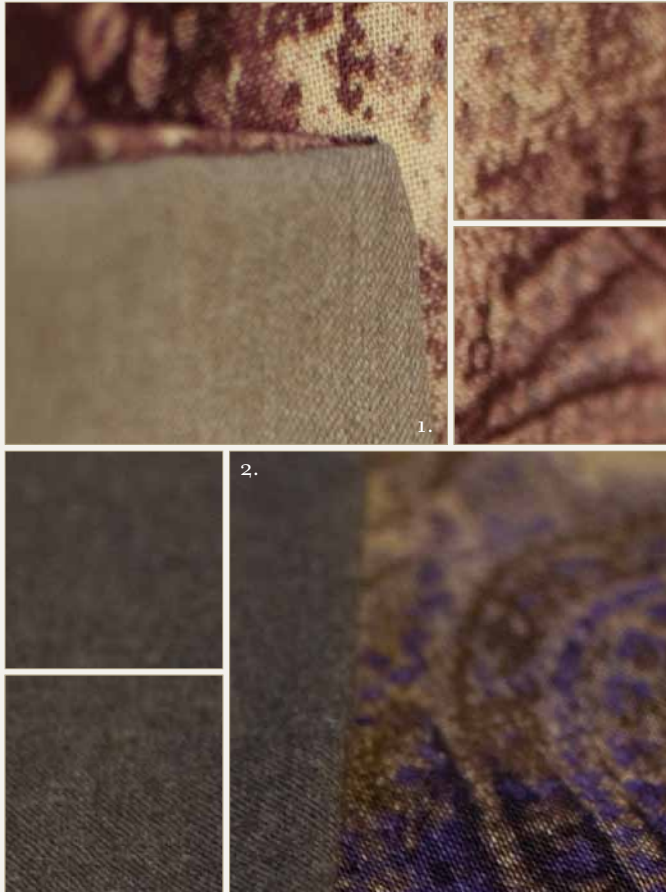




TURBAN wool - jersey and eco-leather

Available in:

1. Green Tea/Grey, 2. Grey/Beige,
3. Grey/Green Tea, 4. Brown eco leather/Green



FOULARD/SCARF (man & woman)

Available in:

1. Jaquard and Ecrú Flanel , 2. Jaquard and Dark Grey Flanel







Extra-Limited Edition (only 15 pieces available)

TRISCIA multi-use wool scarf

Available in:

1. Green Tea, 2. Fern Green, 3. Taupe Brown





Limited Edition

CLOCHE wool cloche with wool-crêpe headband and bow

Available in:

1. Green Tea/Black, 2. Yellow/Caramel, 3. Petrol Green/Ecru,
4. Ecru/Paisley Pattern, 5. Black/Green Tea, 6. Black/Ecru

We can't ensure the availability of all colors and patterns. Some items are unique pieces or part of very small productions series and will be available until we run out of stock. Hope will be the fastest ones, and you will love the uniqueness of our products.

www.madameframboise.com